

STATE OF FLORIDA  
 COUNTY OF PALM BEACH  
 THIS PLAT WAS FILED FOR  
 RECORD AT \_\_\_\_\_ M.  
 THIS \_\_\_\_\_ DAY OF \_\_\_\_\_  
 A.D. 2003 AND DULY RECORDED  
 IN PLAT BOOK \_\_\_\_\_ ON  
 PAGES \_\_\_\_\_ AND \_\_\_\_\_  
 DOROTHY H. WILKEN  
 CLERK CIRCUIT COURT

BY: \_\_\_\_\_  
 DEPUTY CLERK

SHEET 4 OF 7

# DIAMOND "C" RANCH

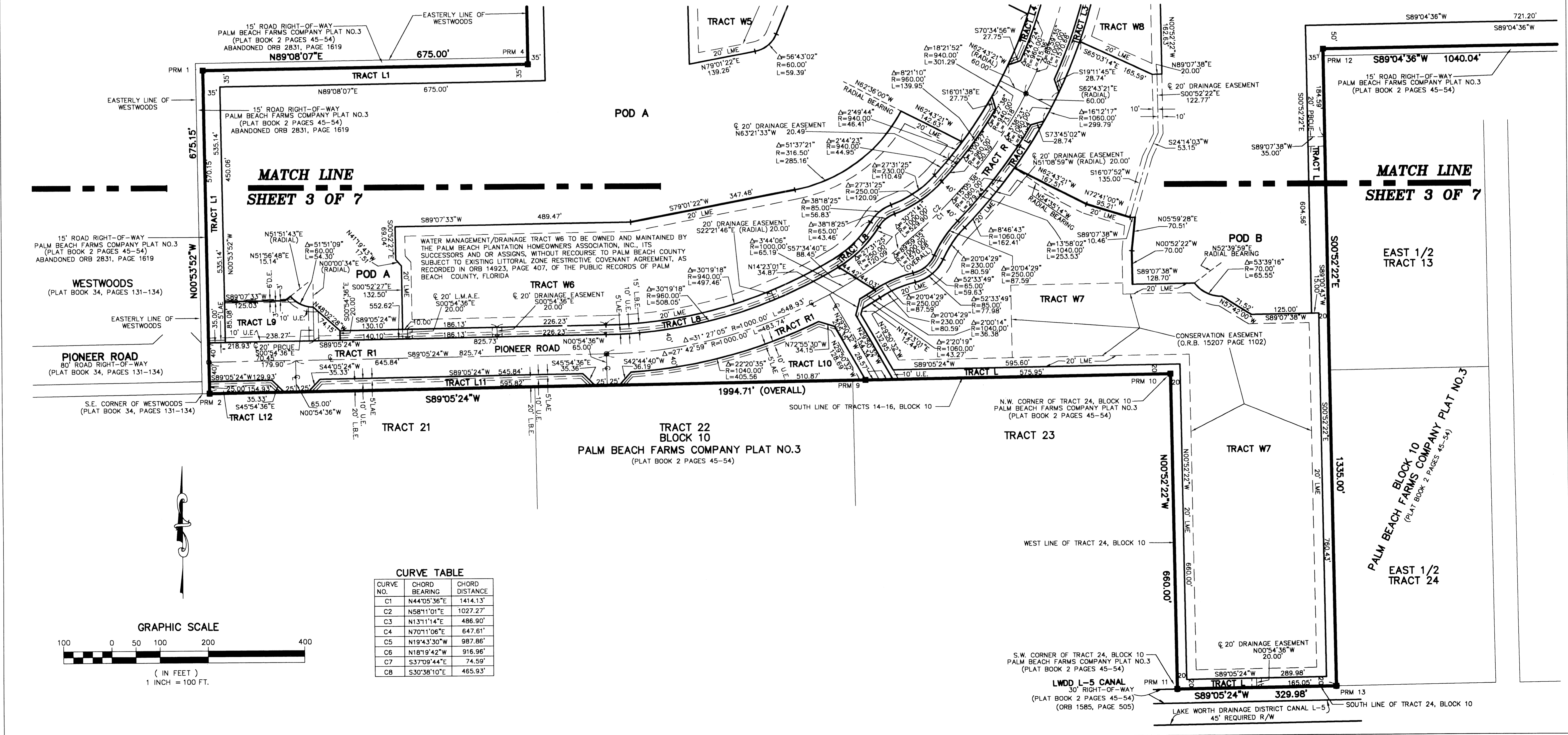
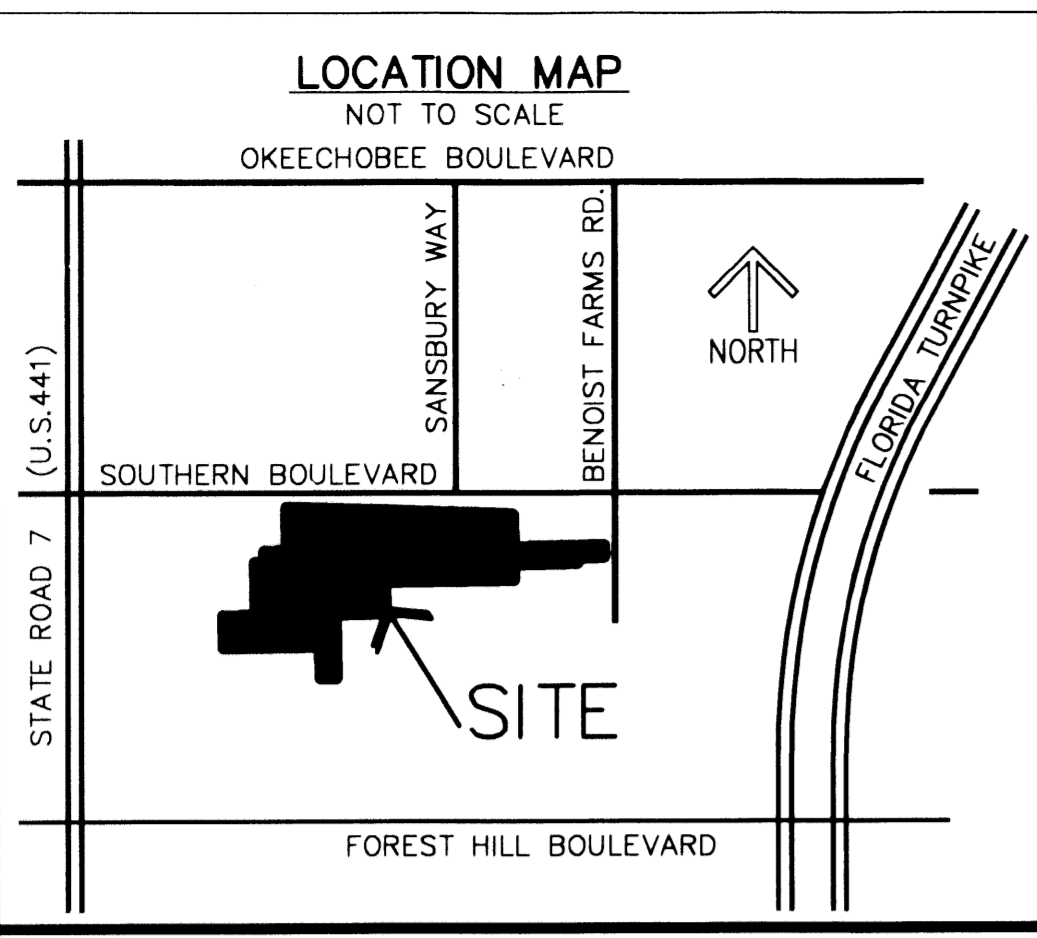
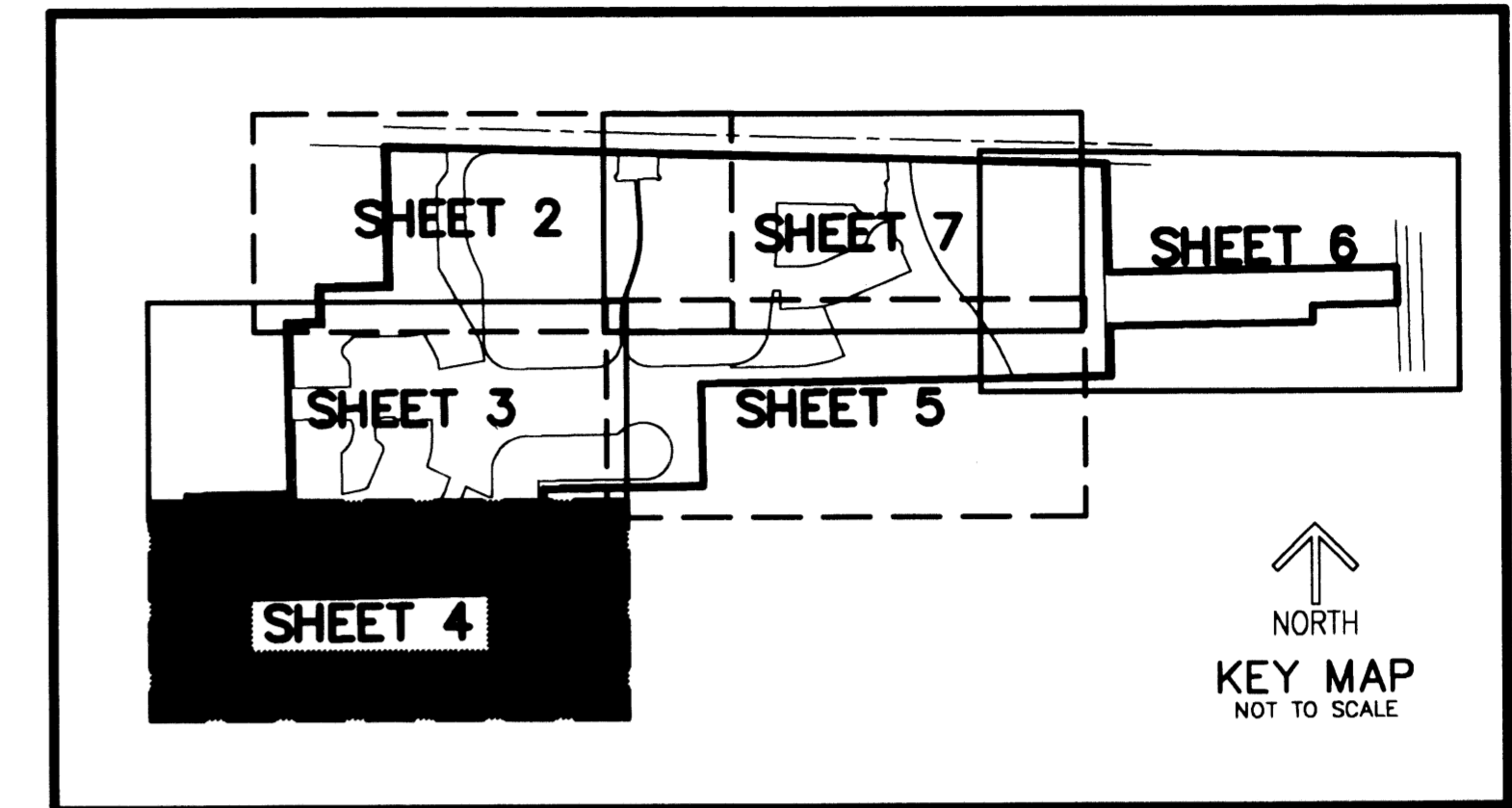
A PLANNED UNIT DEVELOPMENT, BEING A REPLAT OF ALL OF "PINELAND PARK", AS RECORDED IN PLAT BOOK 11, PAGE 62, AND  
 A REPLAT OF A PORTION OF BLOCKS 7, 8, 10 AND 11, "PALM BEACH FARMS COMPANY PLAT NO. 3, AS RECORDED IN PLAT BOOK 2, PAGES 45 THROUGH 54,  
 ALL OF THE PUBLIC RECORDS OF PALM BEACH COUNTY, FLORIDA, LYING IN SECTIONS 5 AND 6, TOWNSHIP 44 SOUTH, RANGE 42 EAST, PALM BEACH COUNTY, FLORIDA

THIS INSTRUMENT PREPARED BY  
 DAVID P. LINDLEY  
 OF  
**CAULFIELD and WHEELER, INC.**  
 SURVEYORS - ENGINEERS - PLANNERS  
 7301-A WEST PALMETTO PARK ROAD, SUITE 100A  
 BOCA RATON, FLORIDA 33433 - (561)392-1991  
 JUNE - 2002

## NOTES COORDINATES, BEARINGS AND DISTANCES

COORDINATES SHOWN ARE GRID  
 DATUM = NAD 83 1990 ADJUSTMENT  
 ZONE = FLORIDA EAST  
 LINEAR UNIT = US SURVEY FEET  
 COORDINATE SYSTEM 1983 STATE PLANE  
 TRANSVERSE MERCATOR PROJECTION  
 ALL DISTANCES ARE GROUND  
 SCALE FACTOR = 1.00002175  
 GROUND DISTANCE X SCALE FACTOR = GRID DISTANCE  
 BEARINGS AS SHOWN HEREON ARE GRID DATUM, NAD 83 1990  
 ADJUSTMENT, FLORIDA EAST ZONE.

S88°18'52"E (PLAT BEARING) 00°04'41" = BEARING ROTATION  
 S88°23'33"E (GRID BEARING) COUNTER CLOCKWISE (PLAT TO GRID)  
 NORTH LINE THIS PLAT

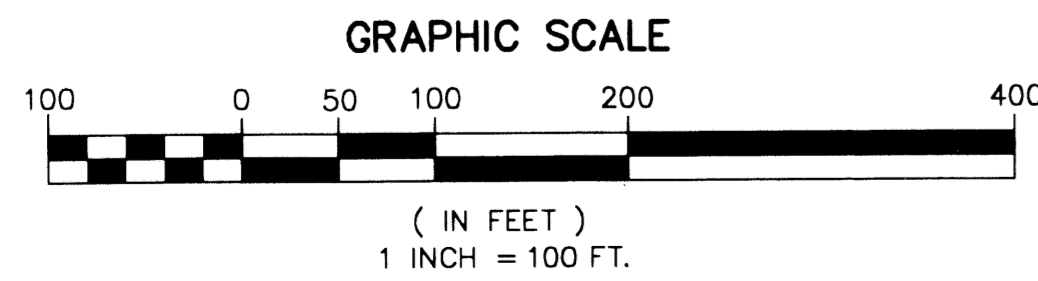


MATCH LINE  
 SHEET 3 OF 7

MATCH LINE  
 SHEET 3 OF 7

**CURVE TABLE**

CURVE NO.	CHORD BEARING	CHORD DISTANCE
C1	N44°05'36"E	1414.13'
C2	N58°11'01"E	1027.27'
C3	N13°11'14"E	486.90'
C4	N70°11'06"E	647.61'
C5	N19°43'30"W	987.86'
C6	N18°19'42"W	916.96'
C7	S37°09'44"E	74.59'
C8	S30°38'10"E	465.93'



SUBDIVISION DIAMOND "C" RANCH  
 BOOK 99  
 FLOOD ZONE AH  
 QUAD # 41  
 SE  
 TAZ 177, 1009  
 PUB NAME

EAST 1/2 TRACT 13  
 EAST 1/2 TRACT 24  
 PALM BEACH FARMS COMPANY PLAT NO. 3  
 BLOCK 10  
 (PLAT BOOK 2 PAGES 45-54)